

Featured home:

Amenities, details abound in Wetzl's ranch plan



Dennis E. Aures
Home Finder Editor

Wetzl Development, LLC is showcasing a new luxury ranch design at 19 Reed Hill Dr. in East Aurora this weekend.

Tapered columns create a sheltering front entry; stacked stone banding trims the front facade and a side-loading garage eliminates the big door look on

the streetscape. ing tub, walk-in shower, radiant-heat flooring, a double sink mirrored vanity and private toilet area.

Two secondary bedrooms and a hall bathroom will serve family and guests. One bedroom could easily become a den/home office.

"The home is priced at \$631,000," said Black, who teams with Mark Kaminski, also an associate broker with RealtyUSA.

In addition to the model, Wetzl also has home sites available in Reed Hill Estates. The T-shaped community ends in two cul-de-sacs, so there is no through traffic.

The home is open from 1 to 3 p.m. Saturday and Sunday. To visit from Orchard Park, take E. Quaker Road (Route 20A) from the Four Corners and turn at Jewett-Holmwood Road to Reed Hill Estates; from East Aurora, follow Main Street to Quaker Street to Jewett-Holmwood to Reed Hill Estates.

For more information or an appointment, call 310-4085 or 998-6429.

the streetscape.

With approximately 2,300 square feet of living space, the three-bedroom plan presents an open floor plan complemented by volume ceilings and brightened by lots of windows.

Glenn Wetzl is known in the South-towns as the developer of Franklin Park townhomes and more recently Stone-bridge patio homes, both in Hamburg, noted Judy Black, associate broker with RealtyUSA and sales and marketing representative for the builder.

This model home "reflects his attention to detail and his ability of produce the high-end finishes and to choose desirable floor plans that have served him so well in past projects," continued Black.

The entry shows a Craftsman-style front door with sidelights and transom window. Alder hardwood flooring begins in the foyer and is featured in most of the public rooms of the home. An open staircase to the lower level is to the right of the foyer/hallway.

Straight ahead is the great room with a 15-foot high coffered ceiling and rear wall of stacked windows. A gas-burning fireplace with stone façade is situated on the side wall. The fireplace is flanked by custom shelves on one side and an entertainment center on the other side.

"Alder is the wood of choice by decorator Judith Murchison of Murchison Interiors," noted Black, "and it continues in the shelves, cabinets, panels and doors throughout the home."

The alder wood kitchen cabinets and granite countertops create a C-shaped layout with sit-at island and interior wall of more cabinets and counter space. Top-of-the-line stainless steel appliances abound in this "chef's delight" kitchen.

The adjoining dining area is surrounded by windows with a view of the deep lot and pond.

The family entrance from the garage includes a bench, shelves for storage and hooks for jackets. The powder room and laundry room are also off the hallway.

The bedroom wing is on the other side of the home. The master bedroom suite, at the rear of the wing, shows a tray ceiling with indirect lighting. The walk-in closet highlights a California closet installation.

The master bath features a free-standing



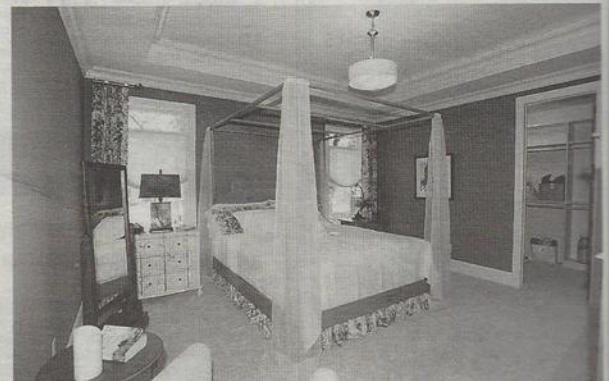
ABOVE: The great room has a 15-foot high coffered ceiling. The gas-burning fireplace shows a stone façade and custom shelves on one side and an entertainment center on the other side.



Cover and feature photos
by JAMES LESINSKI



ABOVE: The entry presents a Craftsman-style front door with sidelights and transom. Alder hardwood flooring begins in the foyer. LEFT: The C-shaped kitchen includes a sit-at island and an interior wall of more cabinets.



ABOVE: The master bedroom suite highlights a tray ceiling with indirect lighting, a walk-in closet with a California closet installation and a private bath. The master bath (left) features a free-standing tub (not shown), a walk-in shower, radiant-heat flooring and a double sink mirrored vanity.